

Bait region-thiol ester mapping in human α_2 -macroglobulin

Peter G.W. Gettins^{a,b,*}, Brenda Crews^b, Albert H. Beth^c, Kálmán Hideg^d

^aDepartment of Biochemistry, M/C 536, University of Illinois-Chicago, 1819-1853 W. Polk Street, Chicago, IL, 60612-4316, USA

^bDepartment of Biochemistry, Vanderbilt University School of Medicine, Nashville, TN 37232-0146, USA

^cDepartment of Physiology & Molecular Biophysics, Vanderbilt University School of Medicine, Nashville, TN 37232-0146, USA

^dCentral Laboratory for Chemistry, University of Pécs, Pécs, Hungary

Received 24 April 1995

Abstract The separations between aromatic residues in the bait region and nitroxide spin labels attached to the thiol ester-forming residues (Cys⁹⁴⁹ and Gln⁹⁵²) in human α_2 -macroglobulin (α_2 M) have been determined from paramagnetic broadening effects of the spin labels on bait region ¹H NMR signals. We found that both the Cys⁹⁴⁹ and Gln⁹⁵² residues are within 11–17 Å of the aromatic residues in the bait region, with closer approach of some residues to the Gln⁹⁵² spin label than to the spin label attached to Cys⁹⁴⁹. A model of the location of bait regions and thiol esters within an α_2 M half-molecule is proposed that places the bait regions in the central region of α_2 M at the interface between the subunits.

Key words: α_2 -Macroglobulin; Human; Spin label; Nitroxide; Paramagnetic mapping; Bait region; Thiol ester; NMR (¹H)

1. Introduction

Cleavage of the bait region in human α_2 M by proteinase is the initiating event that results in the large-scale conformational changes that trap the proteinase and lead to binding of the α_2 M-proteinase complex to receptor through exposure of the receptor binding region on the α_2 M [1]. The mediator of the conformational changes is an internal thiol ester which stabilizes the native conformation of the α_2 M. Bait region cleavage results in activation and rapid opening of the thiol ester [2]. Although an X-ray structure of the conformationally altered form of α_2 M has recently been determined [3], the resolution is too low to permit tracing of the polypeptide chain and thus localization of particular regions of the protein. We therefore still do not have a good idea of the structural relationship of the bait region relative to the thiol ester. The only data that relate to this are from an earlier NMR study from this laboratory, which showed that certain aromatic residues in the bait region are close to the cysteine of the thiol ester [4]. In this paper we have extended this study by using spin labels attached to both residues that form the thiol ester, in order to provide a better map of the location of the bait region relative to that of the thiol ester-forming residues.

*Corresponding author. Fax: (1) (312) 413 8769.
E-mail: pgettins@gettins. BCHE.UIC.EDU

Abbreviations: α_2 M, α_2 -macroglobulin; HO559, 3-(α -bromoacetyl)-2,2,5,5-tetramethyl-2,5-dihydropyrrol-1-yl-oxyl; PROXYL, 2,2,5,5-tetramethylpyrrolidine-1-oxyl; TEMPO, 2,2,6,6-tetramethylpiperidine-1-oxyl.

2. Materials and methods

2.1. Isolation of human plasma α_2 M

Plasma α_2 M was isolated from outdated pooled human plasma, obtained from Vanderbilt University Hospital Blood Bank, by affinity chromatography on zinc chelate resin using the procedure of Imber and Pizzo [5]. The α_2 M was judged to be homogeneous by SDS-PAGE. α_2 M concentrations were determined spectrophotometrically using an extinction coefficient of 640,000 M⁻¹ · cm⁻¹ at 280 nm [6].

2.2. Labelling of α_2 M

α_2 M was labeled at the Cys⁹⁴⁹ residues by first cleaving the thiol ester with 200 mM methylamine at pH 8.0 for 2 h at room temperature followed by removal of methylamine in an ultrafiltration cell and subsequent reaction of the free SH groups with a 10-fold molar excess of the iodo- or bromo- species for 2 h. The concentration of free SH groups was measured by DTNB assay [7] immediately prior to reaction with the labelling reagent and gave close to the theoretical value of 4 SH groups per α_2 M tetramer. Covalent attachment of the amino-TEMPO label to the Gln⁹⁵² side chain was by direct reaction of native α_2 M with 500 mM amino-TEMPO, resulting in attack of the amino group on the thiol ester carbonyl. Because of the bulk of amino-TEMPO the reaction was very slow compared to reaction with the much smaller methylamine [8]. The progress of the reaction was therefore checked periodically by native gel electrophoresis, looking for conversion from slow to fast form. After 7 days the reaction was judged, by this criterion, to be >95% complete. All samples were dialyzed extensively to remove unreacted free nitroxide.

2.3. Polyacrylamide gel electrophoresis

Non-denaturing PAGE was carried out on 5% acrylamide slab gels according to the procedure of Davis [9]. SDS-PAGE was carried out on 7.5% slab gels according to the procedure of Laemmli [10].

2.4. EPR spectroscopy

EPR spectra were recorded at 277K on a Bruker ESP300 spectrometer operating at 9.8 GHz, using a field set of 3490 G, a scan range of 100 G and a modulation frequency of 100 kHz. Each spectrum was the average of 10 scans. Sample concentrations were between 14 and 23 μ M α_2 M tetramer.

2.5. NMR spectroscopy

NMR spectra were recorded on a Bruker AM400 operating at 400 MHz for ¹H using a Carr-Purcell-Meiboom-Gill pulse train to select for the mobile bait region resonances [11], together with a solvent pre-saturation pulse. Spectra are the average of between 4500 and 7000 scans. The sample pH was 6.7. Chemical shifts are given relative to external dimethylsilapentane sulfonic acid.

2.6. Estimation of paramagnetic broadening of resonances

Since most of the resonances of interest overlapped with adjacent resonances, broadenings caused by proximity to paramagnetic spin labels were estimated from the reduction in resonance peak height in the presence of the paramagnetic label compared to that in the diamagnetic control spectrum, together with an estimate of the initial linewidth estimated by deconvolution of the diamagnetic control spectrum or by direct measurement. Thus the initial unperturbed linewidths were estimated to be about 16 Hz for the histidine C(2) proton resonances, 40 Hz for Tyr⁶⁸⁵ and 60 Hz for Phe⁶⁸⁴. Reductions in peak height of as much as 85% were observed. However, it became apparent that this gave an

overestimate of the broadening, which arose from the use of CPMG spectra rather than single pulse NMR spectra. The CPMG spectrum is heavily biased towards emphasis of narrow resonances. Thus broadening of a resonance in a CPMG spectrum would result in a decrease in peak height due both to the broadening and to a more rapid decay of the signal prior to sampling. Since the more upfield of the tyrosine resonances was well resolved, it was possible to estimate the linewidth of the resonance in both diamagnetic and paramagnetic spectra. From this it was estimated that peak height reduction used alone gave a 100% overestimate of the broadening for the broadest resonances, but only a 20% overestimate for the less perturbed histidine resonances. These scaling factors were therefore taken into account in estimating the actual resonance broadenings used subsequently in distance calculations.

2.7. Calculation of separation between nitroxide and bait region side chains

Distances between spin labels and bait region residues were calculated from the measured broadening of ^1H NMR signals using the Solomon–Bloembergen equation [12,13], with the assumption that the second, contact term was unimportant, which is valid given the calculated separations, which are an order of magnitude larger than those expected for contact interactions to be important. Although the estimates of the broadenings may be in error by as much as 50% given the poor Signal-to-noise ratio and resolution of individual resonances this should result in only about 7% error in distance because of the inverse sixth power relationship between separation and broadening. The correlation time appropriate for the calculations is that of the ^1H resonances, estimated previously to be about 10 ns for the highly mobile

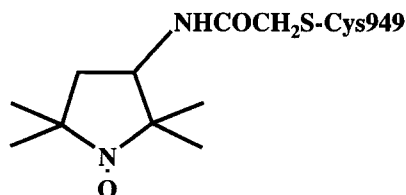
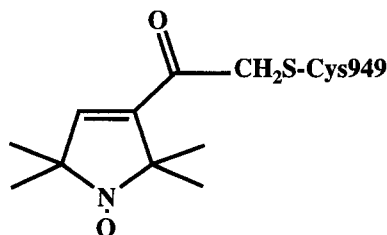
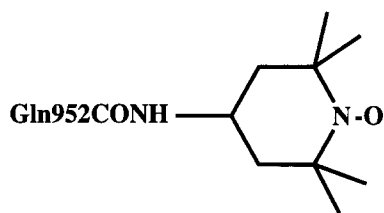


Fig. 1. Labelled $\alpha_2\text{M}$ species used in the study, showing the label used and the residue to which they became attached. (a) Control of acetamide; (b) Amino-TEMPO; (c) HO559; (d) acetamido-PROXYL. The acetamide and PROXYL labels were reacted as iodo-derivatives, HO559 was reacted as the bromo-derivative.

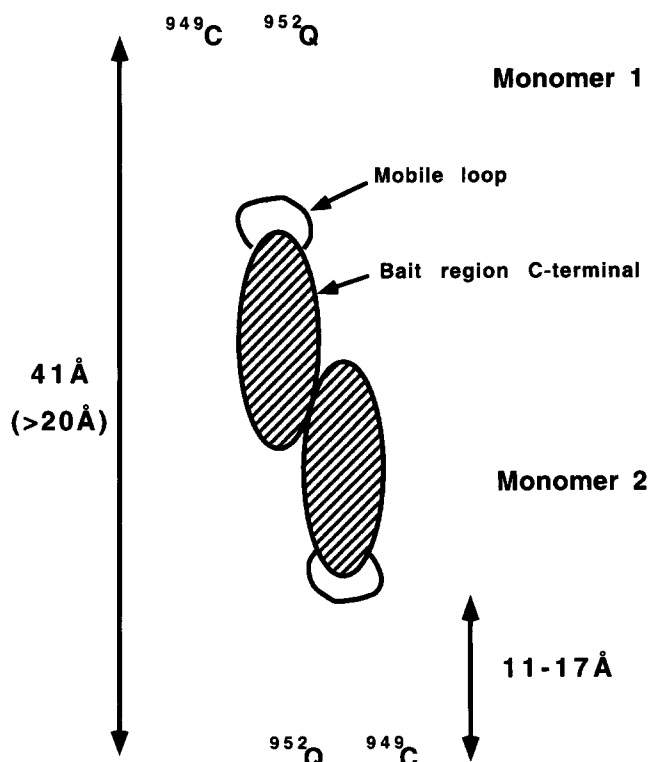


Fig. 2. EPR spectra of $\alpha_2\text{M}$ spin labeled at Cys⁹⁴⁹ or Gln⁹⁵². (a) Gln⁹⁵²-labeled amino-TEMPO; (b) Cys⁹⁴⁹-labeled HO559; (c) Cys⁹⁴⁹-labeled acetamido-PROXYL.

bait region, since the electron spin relaxation time ($\sim 12 \mu\text{s}$ [14]) and of the nitroxide held rigidly by $\alpha_2\text{M}$ ($7 \times 10^{-7} \text{ s}$ [11]) are both much longer and not likely to contribute significantly to the electron spin-nuclear spin vector correlation time.

2.8. Materials

Iodoacetamide, methylamine hydrochloride, and amino-TEMPO were from Sigma, iodoacetamido-PROXYL was from Molecular Probes. 3-(α -bromoacetyl)-2,2,5,5-tetramethyl-2,5-dihydropyrrol-1-ylloxyl (HO559) was prepared as described [15].

3. Results

3.1. EPR spectra of spin-labelled $\alpha_2\text{M}$ species

The three spin labelled $\alpha_2\text{M}$ derivatives examined (Fig. 1) gave EPR spectra that reported nearly completely immobilized nitroxides as the major species in each case (Fig. 2). In addition, the HO559 derivative showed the presence of a minor component with smaller splitting, indicating some heterogeneity of labelling, perhaps involving one or more additional sites. Upon integration it was found that the extent of incorporation of HO559 label was greater (~ 1.4 labels per $\alpha_2\text{M}$ subunit) than that of the amino-TEMPO or acetamido-TEMPO, suggesting that a limited amount of secondary labelling had occurred in addition to reaction at Cys⁹⁴⁹, probably as a result of using a less specific bromo-containing labelling reagent. However, since specific effects of the spin labels on the bait region NMR resonances are being considered in this study, only additional labelling close to the bait region would have any effect on the NMR spectrum. None of the EPR spectra showed any indication of dipole-dipole interaction between nitroxide spin labels

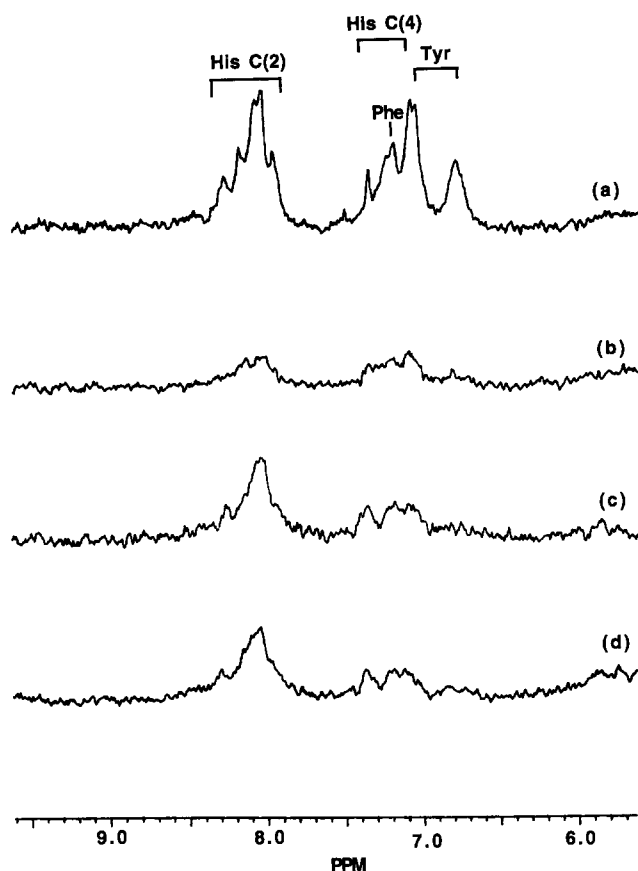


Fig. 3. Paramagnetic broadening of ^1H NMR resonances from $\alpha_2\text{M}$ bait region aromatic residues caused by proximity to spin labels attached to Cys⁹⁴⁹ or Gln⁹⁵². (a) Control spectrum of $\alpha_2\text{M}$ labeled with acetamide (diamagnetic); (b) Gln⁹⁵²-amino-TEMPO; (c) Cys⁹⁴⁹-HO559; (d) Cys⁹⁴⁹-acetamido-PROXYL.

attached to separate Cys⁹⁴⁹ sulfhydryls within the $\alpha_2\text{M}$ tetramer. The absence of such dipole-dipole interaction has previously been shown to require a separation of at least 20 Å between pairs of nitroxides within $\alpha_2\text{M}$ [4].

3.2. Broadening of $\alpha_2\text{M}$ bait region aromatic resonances

The diamagnetic control spectrum of $\alpha_2\text{M}$ labelled at the four Cys⁹⁴⁹ SH groups with acetamide showed the expected sharp resonances (Fig. 3a) from the four histidines, one tyrosine and one phenylalanine that occur in the mobile bait region of $\alpha_2\text{M}$ and one additional unidentified histidine [11]. The corresponding NMR spectra of the three paramagnetically labelled $\alpha_2\text{M}$ species showed significant broadening of these resonances,

though with different degrees of broadening for the resonances in a given spectrum and different broadening of the same resonance by different labels (Fig. 3b–d). HO559 produced very similar, though not identical, broadening to acetamido-PROXYL (Fig. 3c and d). Greater differences were seen with amino-TEMPO, attached to the side chain of Gln⁹⁵² (Fig. 3b). This spin label caused much greater broadening of the histidine resonances. We have previously shown with acetamido-PROXYL-labelled $\alpha_2\text{M}$ that the broadening of the bait region resonances is specifically due to paramagnetic broadening, by restoring the sharpness of the resonances upon reduction of the paramagnetic nitroxide to a diamagnetic moiety with ascorbate [4]. From estimates of the broadening of the bait region aromatic residues, separations between the nitroxides and these side chains were calculated and found to be in the range 11–17 Å (Table 1).

4. Discussion

The appearance of the EPR spectra of Cys⁹⁴⁹- and Gln⁹⁵²-nitroxide labelled $\alpha_2\text{M}$ species and the broadening effect of these nitroxide spin labels on NMR resonances from aromatic side chains within the bait region have provided additional information on the location of the two mechanistically critical structural features in human $\alpha_2\text{M}$, the bait region and the thiol ester. Thus the absence of dipole-dipole interaction between pairs of nitroxides within the same $\alpha_2\text{M}$ tetramer, whether attachment of the nitroxide was to Cys⁹⁴⁹ or to Gln⁹⁵² shows that the separation between such nitroxides must be >20 Å, which is in keeping with other measurements from this laboratory of the separation between pairs of Cys⁹⁴⁹ residues made using fluorescence resonance energy transfer [16,17].

The near rigid limit EPR spectra for both Cys⁹⁴⁹-linked and Gln⁹⁵²-linked nitroxides is also in keeping with other data that suggest that the thiol ester is located at the bottom of a relatively narrow hydrophobic cleft, to which access is limited to small molecules in native $\alpha_2\text{M}$. Thus the reactivity of the thiol ester towards nucleophilic amines shows a strong inverse correlation to the size of the amine [7]. Also the fluorescence properties of 8-[(N-acetylamino)ethyl] naphthalene-1-sulfonic acid attached to Cys⁹⁴⁹ report on a hydrophobic environment [18].

It is clear from the broadening of all of the bait region aromatic resonances by each of the spin labels used in the present study that at least a portion of the bait region is close to both residues that are involved in forming the thiol ester. The similar broadening caused by HO559 and acetamido-PROXYL, despite the additional bond between the nitroxide and the Cys⁹⁴⁹ SH for the latter may be due to different orientations of the nitroxide ring, resulting from the planarity of the

Table 1
Characterization of paramagnetic $\alpha_2\text{M}$ derivatives by EPR and NMR spectroscopies

Label	Derivative	ΔH (G)*	^1H -nitroxide separation (Å)**		
			Phe ⁶⁸⁴	Tyr ⁶⁸⁵	Histidines***
TEMPO	Gln ⁹⁵²	68	12	12	11–12
HO559	Cys ⁹⁴⁹	68.5	12	12	12–17
PROXYL	Cys ⁹⁴⁹	67	12	12	12–17

*Splitting between high field and low field peaks in EPR spectrum at 277K.

**Distance between bait region residues and nitroxide estimated from paramagnetic broadening of ^1H resonances in NMR spectrum, using the Solomon–Bloembergen equation.

***Five histidines give visible resonances in a CPMG spectrum. Four occur in the bait region. Specific assignments have not been made.

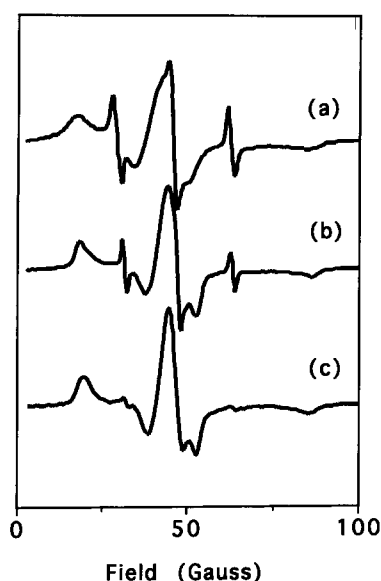


Fig. 4. Model of the bait regions and thiol esters within a half molecule of α_2 M showing possible location of aromatic bait region residues relative to residues that form the thiol ester (Cys⁹⁴⁹ and Gln⁹⁵²). The model represents a transverse section across the α_2 M tetramer that contains the two pairs of thiol ester-forming residues, 17 Å above the central plane (based on previous fluorescence energy measurements which place thiol esters in *different* half molecules ~35 Å apart). The aromatic residues that give rise to the sharp NMR signals that are broadened by the nitroxides are located in the 'mobile loop' portion of the bait region, 11–17 Å from C⁹⁴⁹ and Q⁹⁵², whereas the C-terminal portion of the bait region is thought, from mutagenesis experiments involving bait region truncations [19] to be involved in the non-covalent interface between the two halves of the α_2 M tetramer. The separation between pairs of thiol esters is shown as 41 Å based on previous fluorescence resonance energy transfer measurements [16] and >20 Å based on present EPR measurements.

C=C–C=O and CONH groups and the consequent restriction in location of the nitroxide ring. The greater broadening caused by amino-TEMPO attached to Gln⁹⁵² indicates an asymmetric placement of the bait region with respect to Cys⁹⁴⁹ and Gln⁹⁵². These findings permits a very approximate triangulation to be carried out that places the bait region at the apex of an acute angled triangle with the other vertices formed by the Cys⁹⁴⁹ and Gln⁹⁵² side chains.

This model can be extended to include bait regions and thiol esters from both of the monomers that constitute a proteinase binding site, using recent findings from this laboratory that showed that variants of human α_2 M in which parts of the bait region have been deleted are no longer able to associate non-covalently to form tetramers [19], which suggested a direct role for parts of the bait region in dimer-dimer interactions. Taken together with the distances estimated between bait region residues and the thiol ester and between pairs of thiol esters within one half of an α_2 M tetramer, a model of the bait region and thiol ester within one half of the α_2 M tetramer can be proposed in which the bait regions from non-covalently associated sub-units may be in contact with one another and lie between pairs of thiol ester residues (Fig. 4).

Acknowledgements: This work was supported by NIH Grant HD28187.

References

- [1] Sottrup-Jensen, L. (1989) *J. Biol. Chem.* 264, 11539–11542.
- [2] Sottrup-Jensen, L., Petersen, T.E. and Magnusson, S. (1981) *FEBS Lett.* 128, 123–126.
- [3] Andersen, G.R., Thirup, S., Nyborg, J., Dolmer, K., Jacobsen, L. and Sottrup-Jensen, L. (1994) *Acta Cryst. Sec. D* 50, 298–301.
- [4] Gettins, P., Beth, A.H. and Cunningham, L.W. (1988) *Biochemistry* 27, 2905–2911.
- [5] Imber, M.J. and Pizzo, S.V. (1981) *J. Biol. Chem.* 256, 8134–8139.
- [6] Hall, P.K. and Roberts, R.C. (1978) *Biochem. J.* 17, 27–38.
- [7] Larsson, L.-J. and Björk, I. (1984) *Biochemistry* 23, 2802–2807.
- [8] Zhao, B., Musci, G., Sugawara, Y. and Berliner, L.J. (1988) *Biochemistry* 27, 5304–5308.
- [9] Davis, B.J. (1964) *Ann. NY Acad. Sci.* 121, 404–427.
- [10] Laemmli, U.K. (1970) *Nature* 227, 680–685.
- [11] Gettins, P. and Cunningham, L.W. (1986) *Biochemistry* 25, 5011–5017.
- [12] Solomon, I. (1955) *Phys. Rev.* 99, 559–565.
- [13] Bloembergen, N. (1957) *J. Chem. Phys.* 27, 572–573.
- [14] Fajer, P., Thomas, D.D., Feix, J.B. and Hyde, J.S. (1986) *Biophys. J.* 50, 1195–1202.
- [15] Hankovszky, H.O., Hideg, K., Sár, P.C., Lovas, M.J. and Jerkovicz, G. (1990) *Synthesis-S* 59–62.
- [16] Gettins, P., Beechem, J.M., Crews, B.C. and Cunningham, L.W. (1990) *Biochemistry* 29, 7747–7753.
- [17] Gettins, P.G.W. and Crews, B.C. (1993) *FEBS Lett.* 332, 211–214.
- [18] Larsson, L.-J., Lindahl, P., Hallén-Sandgren, C. and Björk, I. (1987) *Biochem. J.* 243, 47–54.
- [19] Gettins, P.G.W., Hahn, K.-h. and Crews, B.C. (1995) *J. Biol. Chem.* 270, in press.